



RoomWizard
Scheduling Solution

Steelcase

Simple Navigation

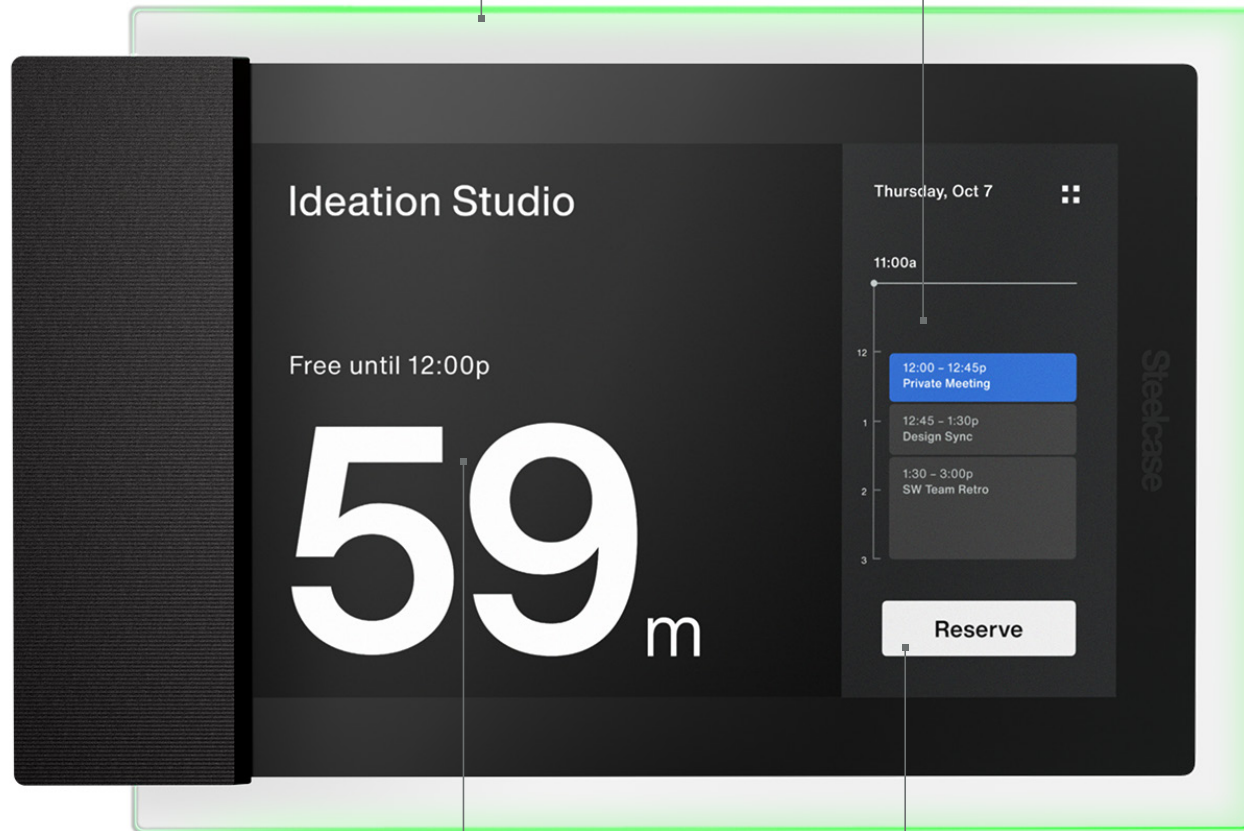
Find and reserve space with confidence. RoomWizard® is a room scheduling solution that makes it easier to get where you need to go. RoomWizard is designed to display critical meeting information so that it's readable from a distance. It assists in wayfinding and makes it easy to schedule meeting spaces from your desk or on demand at the device.

Clear Wayfinding

LED status lights show availability from a distance.

Interactive Timeline

Timeline displays room schedule for the day.

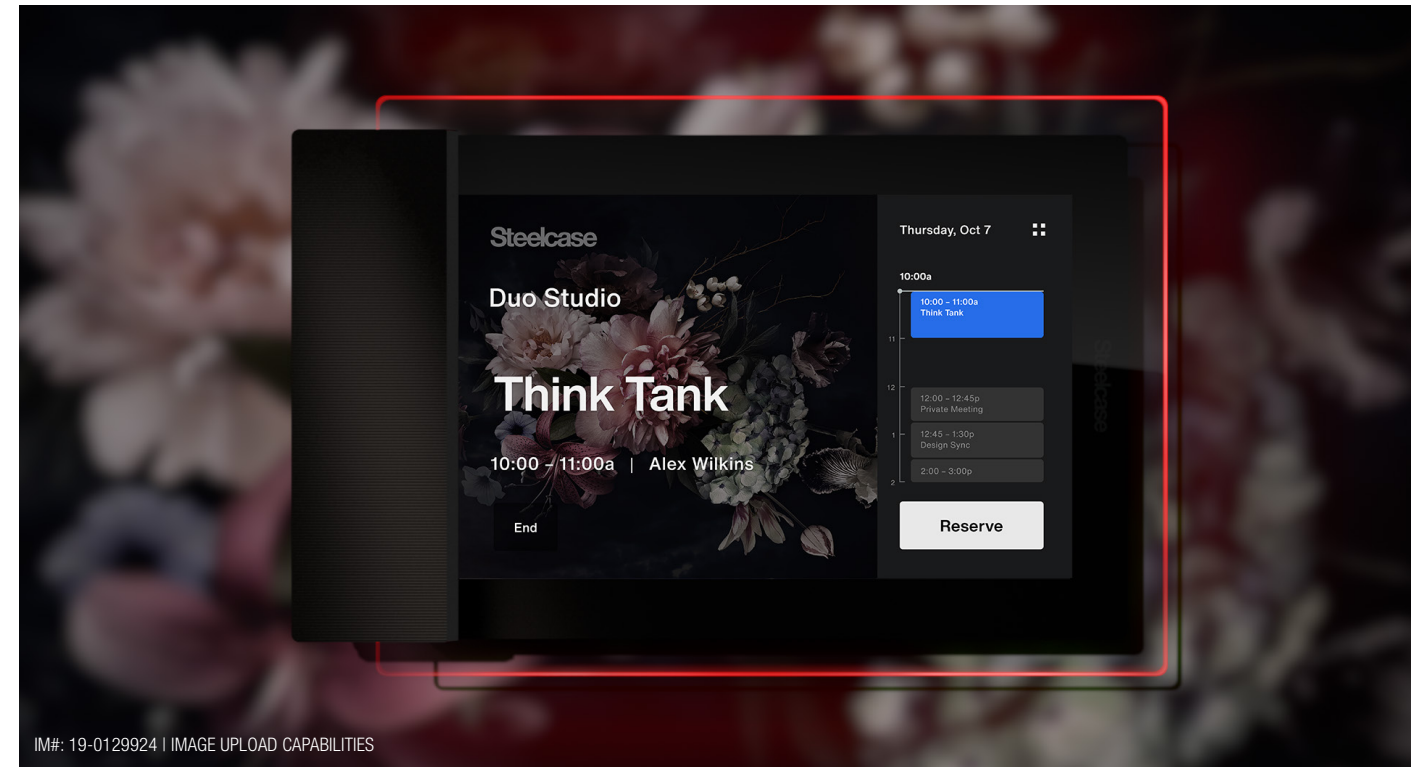


Simple Interface

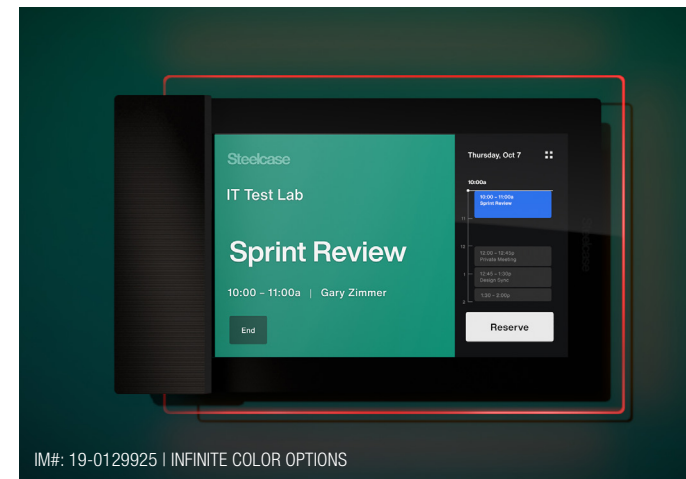
Large font clearly displays space availability and meeting information.

Easy Reservations

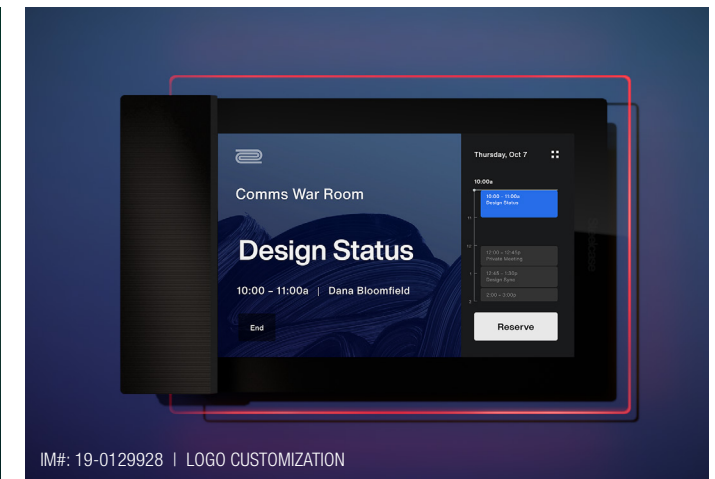
Clear call to actions help users navigate the interface and reserve now or later.



IM#: 19-0129924 | IMAGE UPLOAD CAPABILITIES



IM#: 19-0129925 | INFINITE COLOR OPTIONS

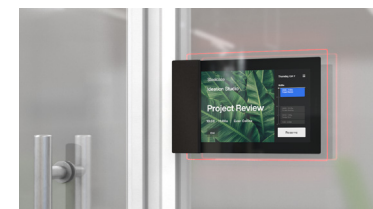


IM#: 19-0129928 | LOGO CUSTOMIZATION

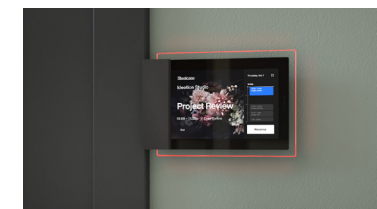
EASY CUSTOMIZATION

Make it your own with customization options that fit your brand, reflect your culture and define your team spaces all while adding an additional level of wayfinding and personality. Add your logo, select a background color or upload an image.

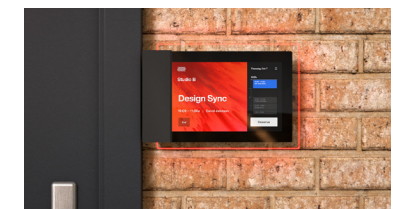
MOUNTING OPTIONS



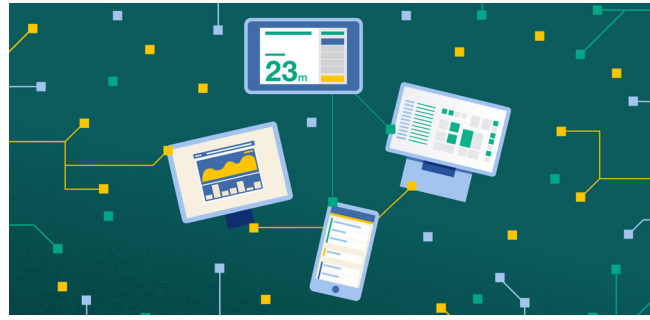
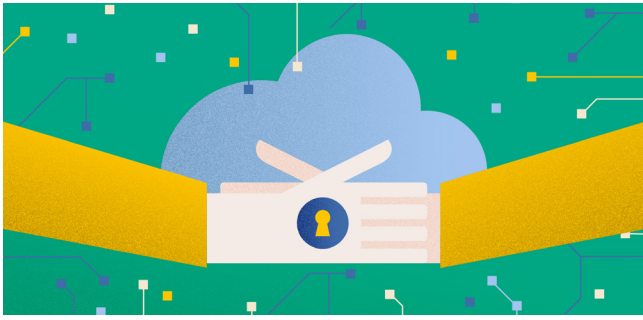
Glass



Drywall



Universal



ENTERPRISE PLATFORM

Built on the Microsoft Azure® trusted cloud infrastructure, RoomWizard is a secure, all-in-one enterprise scheduling solution that's easy to use, manage and maintain from a single device manager web application.

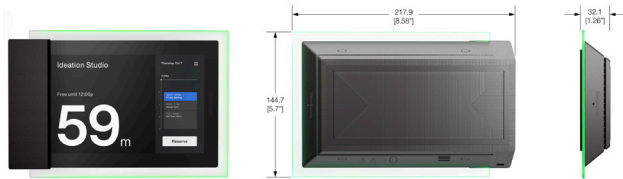
- Encryption is used for transfer of data
- Simple, remote management from Steelcase IoT Admin Portal web application
- Easy to scale
- Global customer support
- Integrates into existing scheduling and calendar platforms
- Enable meeting check-in at room, room will release if no check-in occurs
- Powered and connected via PoE+

SEAMLESSLY INTEGRATED

RoomWizard connects to the Steelcase Smart + Connected workplace which enhances the employee experience with digital wayfinding, smarter space management and collaborative tools.

- Pair with Workplace Advisor Subscription sensors for Auto Book and Auto Release features
- Add Live Map for a large-scale, digital display of real-time availability and locations of meeting rooms and workspaces
- Reserve space from the Steelcase Find app and your reservation is displayed at the room

STATEMENT OF LINE



RoomWizard Hardware:

Options: Wall mount, glass mount, universal mount
 Note: The RoomWizard hardware is purchased outright

RoomWizard Software Subscription:

Options: Prepaid subscriptions available
 Note: What does the subscription include?

- RoomWizard application on device
- Calendar integration
- Steelcase IoT Admin Portal
- Access to updates for new features and security

TECHNICAL SPECIFICATIONS

Device Details:

- Android operating system, 4 GB LPDDR3 RAM, 16:10 aspect ratio, 1920x1200 screen resolution
- 7" capacitive touch screen that supports up to 5 simultaneous points of interaction
- Edge LED status lighting
- Network connectivity and power via PoE (power over ethernet) - 1x10/100/1000M, DHCP and static IP address support, IEEE 802.3at Type 2 PoE+ compliant
- ARM Cortex-A17 Quad Core CPU running at 1.4 Ghz
- 32GB internal flash memory

Cloud-Based Application:

- Remote Management - The Steelcase IoT Admin Portal built on an Azure hosted cloud-based platform, allows IT administrators to easily deploy, manage and monitor all devices from a single web interface
- Seamless calendar integration
- Configurable alerts available via email or text



Call 800.333.9939 or visit Steelcase.com

- facebook.com/Steelcase
- twitter.com/Steelcase
- youtube.com/SteelcaseTV